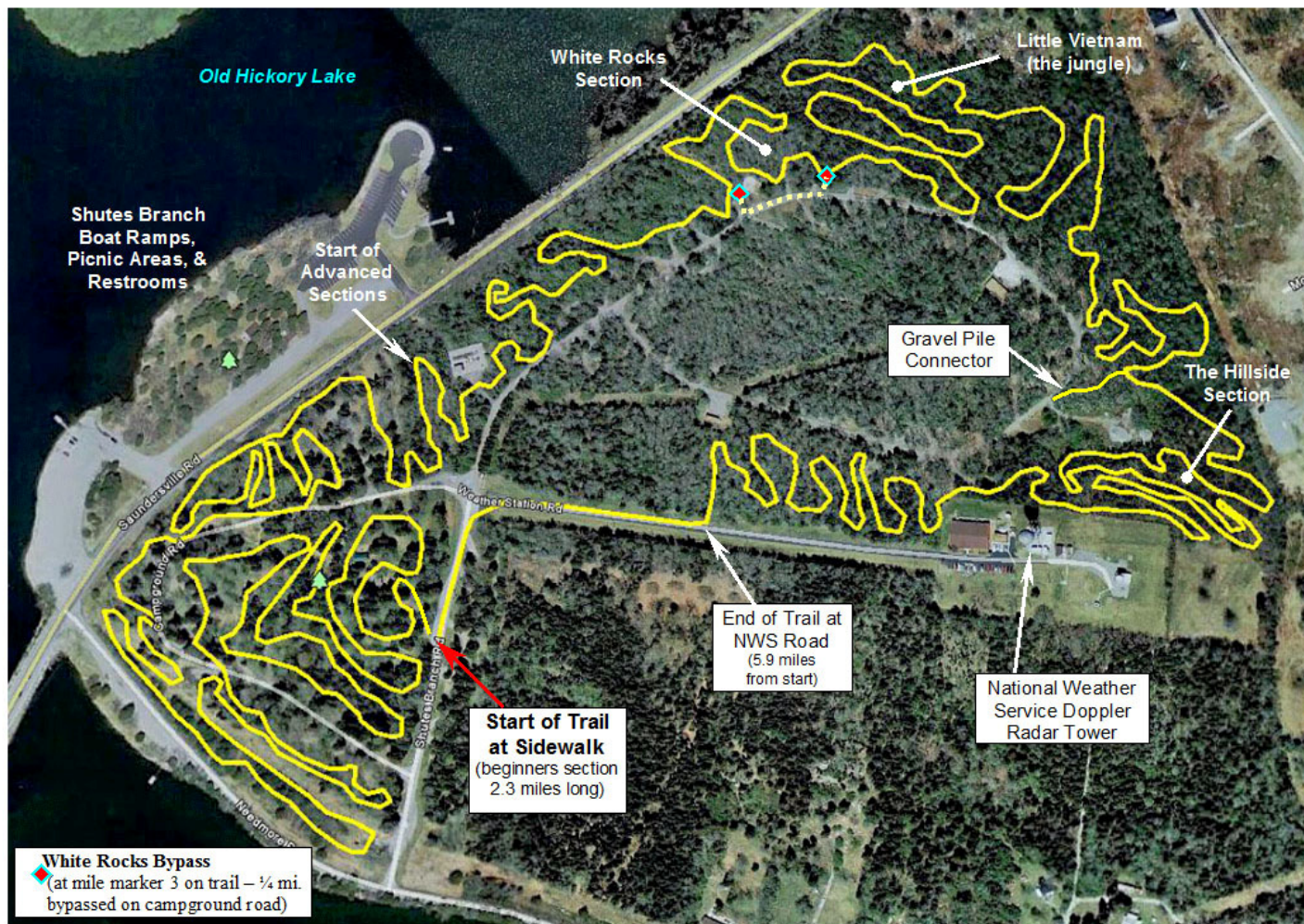


Shutes Branch MTB Trail

Mt. Juliet, Wilson County, Tennessee



Brought to you by the US Army Corps of Engineers and the Friends of Shutes Branch. For more info: <http://shutesbranchmtb.blogspot.com/>

2010 National Public Lands Day

Trail Work Day, Cookout, and Play Time!!!

September 25 (Saturday)

Schedule: Start at 8:30 am – End ??? Sometime in the afternoon???

Meeting Place: The parking lot at the trailhead (we'll walk over to the end of the trail)

What to Bring/Wear: Long pants, work boots, gloves, and safety glasses. Don't forget to bring a change for afterwards. Also, bring your favorite trail tool (make sure to put your name on it). Also bring water and snacks to keep your energy level up.

Cookout: We'll be cooking something on the grills near the weather service radar tower. Food provided by the COE. We'll also have some give-a-ways and a surprise!

National Weather Service Tour: We have a tour planned by the NWS of the weather station after lunch. It's a short hike to the top of the hill.

Play Time: After lunch and the tour, we'll hit the trail and enjoy the fruits of our labor.

For More Info, call or e-mail Steve Capps at 615-497-4465 / scapps@tds.net